

aut: press the brewhouse of the adambräu brewery by lois welzenbacher
a transformation for aut and the university of innsbruck's archive for architecture

“Architecture would not survive for generations if it didn't possess the ability to adapt to changing uses, to indeed allow transformations of meanings.”
 (Friedrich Achleitner)

Since 2005, aut. architektur und tirol has been located in the brewhouse of the former Adambräu brewery, a structure by the Tyrolean architect Lois Welzenbacher originating from the 1920s. The emblematic classic modernist industrial building was placed under landmark status after brewery operations ended and adapted between 2000 and 2004 by the architects' collective of köberl + giner & wucherer_pfeifer (Rainer Köberl, Thomas Giner, Erich Wucherer and Andreas Pfeifer) for **aut** and the University of Innsbruck's Archive for Architecture.

Erected according to plans by Lois Welzenbacher (1889–1955), the brewhouse of the Adambräu brewery is one of the few preserved structures of this important architect in Tyrol. A modern industrial building, developed out of the requirements of the production process, a machine, a symbol for the rationalism of technology, placed with precision into the cityscape by Lois Welzenbacher.

The stringent concept of shape and function was, however, open enough to allow a new utilization. The architects' collective of Rainer Köberl, Erich Wucherer, Thomas Giner and Andreas Pfeifer retained the spirit of the house with their sensitive inner transformation. The former structure remains palpable. New, completely contrary contents and functions blend seamlessly into the complex spatial structure and correspond with the original industrial usage in a metaphoric sense.

Devoted to the storage, preservation and exploration of architecture and civil engineering in the Alpine region, the Archive for Architecture of the University of Innsbruck is housed in the former area of the silos and conveyor plants, which were converted into office and archive storage spaces. The space for the brewing kettles, opened towards Sudbahnstrasse and the former Karmel compound – circular openings recall them – with staggered stories and surprising vistas, resp., connections, as well as the introverted, erstwhile technical rooms below, serve architectural mediation purposes through exhibitions, events and lectures by **aut. architektur und tirol**.

chronology

1926/27

Construction of the brewhouse according to the plans of the architect Lois Welzenbacher

1931

Completion of the entire complex with the brewhouse and the cooler

1994

Cessation of brewery operations on the Adambräu premises
Initial efforts to preserve the structures built by Lois Welzenbacher

1995

Discussion between Tyrolean Governor Wendelin Weingartner and representatives of the Chamber of Architects and Chartered Engineering Consultants, the Central Association of Austrian Architects and the Architekturforum Tirol about post-utilization concepts for the brewhouse – the idea of a house for architecture arises.
Brewhouse and cooler are placed under monument preservation.
Friedrich Achleitner brings the Architekturforum Tirol into play as the possible user.

1999

Concept for a “House for Architecture in the Former Adambräu Brewhouse” is developed by the Architekturforum Tirol and the University of Innsbruck and presented to decision-makers from the Tyrolean State Government, the City of Innsbruck, the University of Innsbruck, the BOE Facility Management Company, ATP Architects and Engineers, the Austrian Federation of Limited-Profit Housing Associations and the Federal Monuments Authority.

2000

Rainer Köberl, Thomas Giner and Erich Wucherer are commissioned to do a feasibility study.

2002

Purchase of the brewhouse by the City of Innsbruck
Commission for the conversion awarded to Rainer Köberl, Thomas Giner and Erich Wucherer

2003

Start of the conversion

2004

Completion of the renovations and handover to the users

2005

Opening of the Adambräu complex on January 14, 2005

aut: press **press photos**
aut. architektur und tirol

Printable image material is available to you for downloading in the press area of our website (image width about 15 to 20 cm)

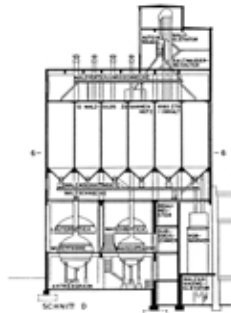
The photos may be reprinted free of charge only in the context of the reporting on the aut and with the specified photo credits.



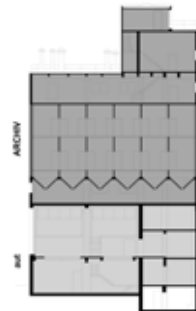
adambrau_um1930.jpg
Brewhouse of the Adambrau brewery, round 1930
Credit: Archiv Franz Peter Brasdauski



brauraum_um1930.jpg
Brewhouse of the Adambrau brewery, round 1930
Credit: Archiv Franz Peter Brasdauski



Brauschema.jpg
Brewhouse, section
with chematic diagram of brewing



adambrau_längsschnitt.jpg
Brewhouse, section
lower floors: aut. architektur und tirol
upper floors: „Archiv für Baukunst“
(planing: köberl + giner&wucherer_pfeifer)



adambraeu_Bauherren@aut.jpg
The architects and the builder-owners (City of Innsbruck)
(von li. nach re. Erich Wucherer, Thomas Giner, Rainer Köberl, Andreas Pfeifer, Hilde Zach, Christian Karl (IIG), Helmut Rofner (IIG), Johann Newerkla (IIG))